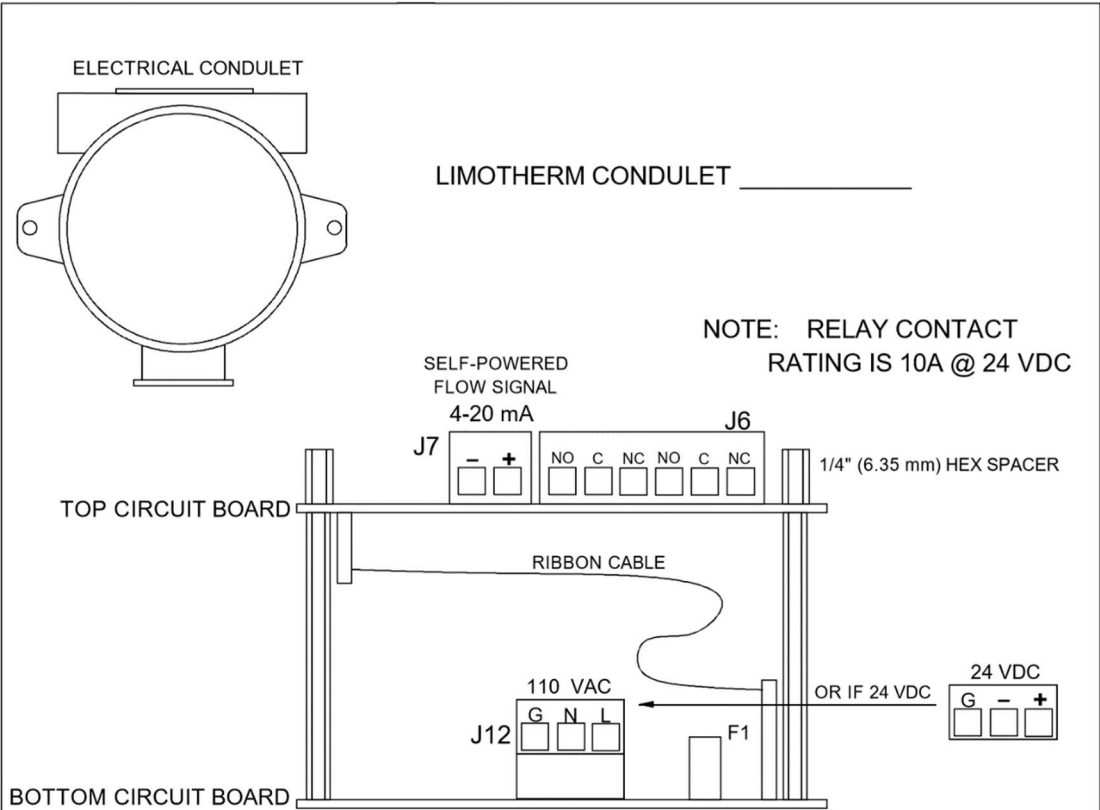



Wiring Diagram — Power / 4-20mA (Optional) Board Diagram

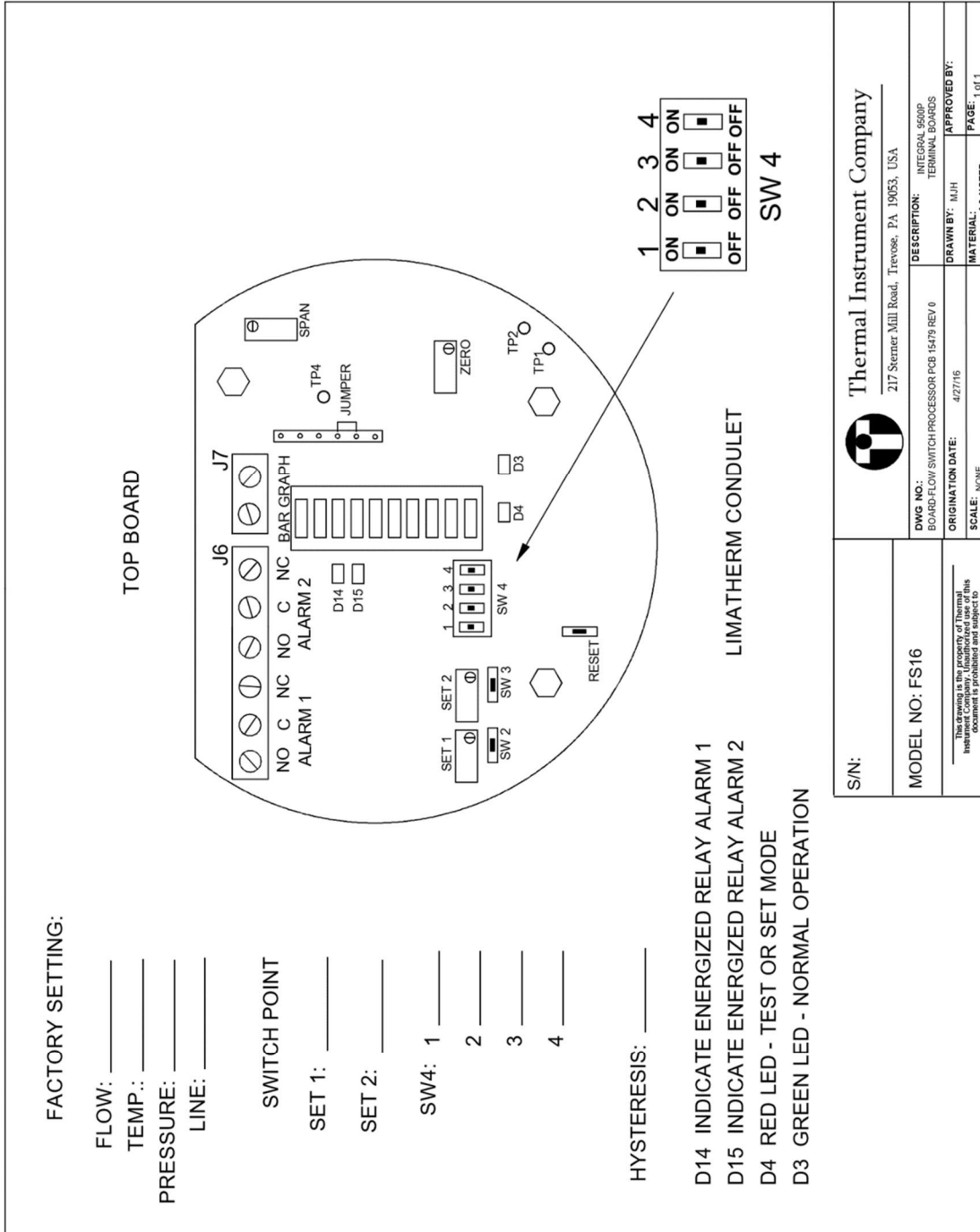


CONNECT POWER TO J12 TERMINALS ON BOTTOM BOARD

REMOVE THREE 1/4" HEX SPACERS MOUNTED ON TOP BOARD AND LIFT OFF BOARD.
 CONNECT WIRES TO J12 FOR POWER. (CAN USE 1/4" SOCKET)
 BE SURE RIBBON CABLE IS PROPERLY CONNECTED.
 REPLACE TOP BOARD AND CONNECT WIRES TO RELAY CONTACTS ON TOP BOARD.

SERIAL NO.	 Thermal Instrument Company 217 Sterner Mill Road, Trevoose, PA 19053, USA		
	DWG NO.: WIRING-FS-LIMOTHERM-COND-REV 1	DESCRIPTION: WIRING DIAGRAM FLOW SWITCH LIMOTHERM CONDULET	
<small>Thermal Instrument Company Proprietary Statement: This drawing is the property of Thermal Instrument Company. Unauthorized use of this document is prohibited and subject to prosecution if violated.</small>	ORIGINATION DATE: 3/27/19	DRAWN BY: MJH	APPROVED BY: MJH
	SCALE: NONE	MATERIAL:	PAGE: 1 of 1

Flow Dip Switch Settings Diagram



S/N:			Thermal Instrument Company 217 Sterner Mill Road, Treviso, PA 19053, USA
MODEL NO: FS16	DWG NO.: INTEGRAL 9500P BOARD-FLOW SWITCH PROCESSOR PCB 15479 REV 0	DESCRIPTION: INTEGRAL 9500P TERMINAL BOARDS	
	ORIGINATION DATE: 4/27/16	DRAWN BY: MJH	
	SCALE: NONE	APPROVED BY:	
		MATERIAL: AS NOTED	
		PAGE: 1 of 1	